

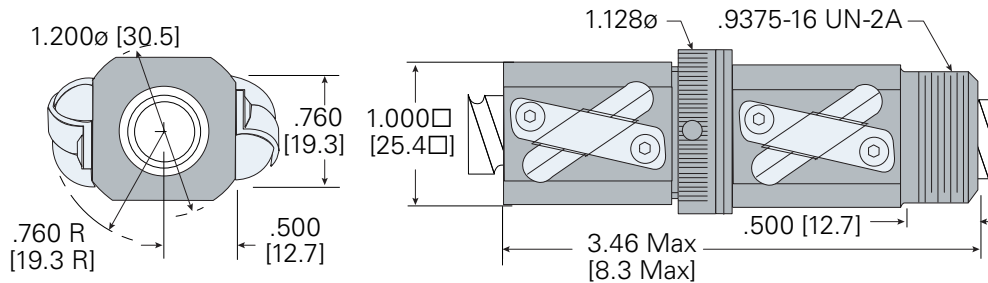
Precision Rolled Ball Screws

Double Circuit Ball Nut w/ Adjustable Preload

.631" diameter x .500" lead



Ball Nut Part Number: **HBN6316**
 Helix: **RH**
 Dynamic Load: **960 lb**
 Static Load: **5,565 lb**
 Balls per Circuit/Nut: **37/148**
 Nominal Ball Diameter: **.125"**
 Torque to Raise 1 lb: **0.088 in/lb**
 Nut Weight: **0.65lb**

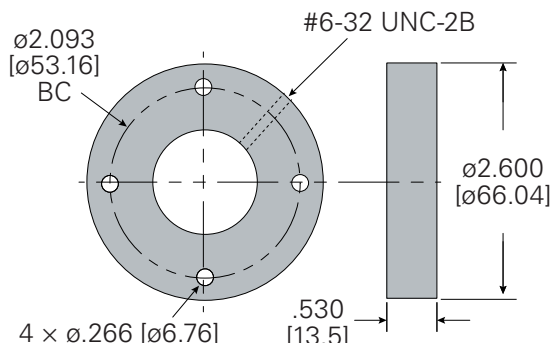


Ball Screw	
<i>single start</i>	
Ball Screw Part Number:	0017
Ball Circle Diameter:	.631"
Lead:	.500"
Root Diameter:	.500"
Screw Weight:	0.81 (lb/ft)

Standard Screw Lengths	
<i>Custom cut lengths available up to 12'</i>	
Length	Part Number
2'	CLB6324
4'	CLB6348
6'	CLB6272

Flange

RFL6310 (alloy)



Contact a Helix sales engineer:
sales@helixlinear.com
 216-485-2232